

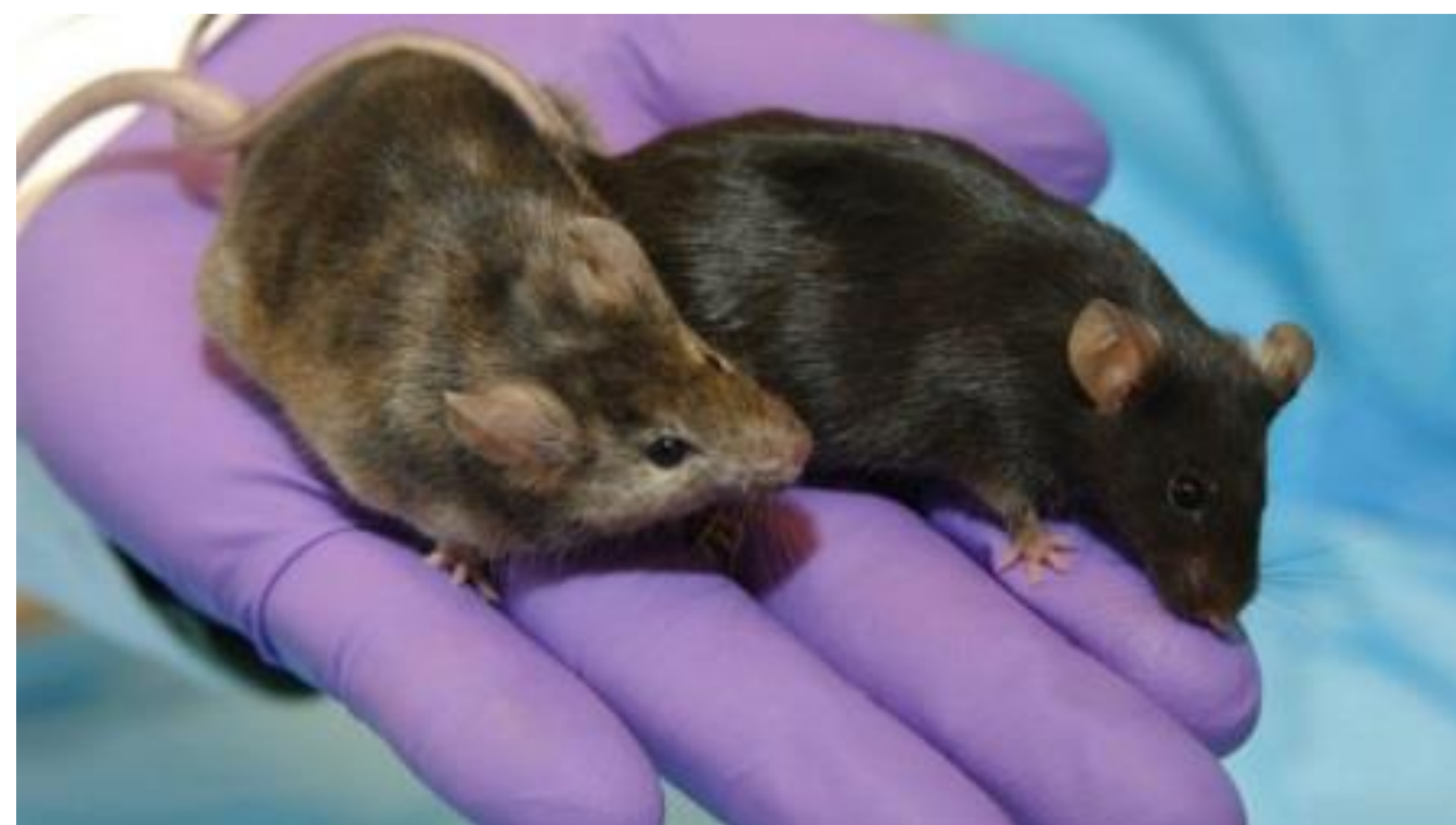
## Company Overview

AJES LifeSciences, LLC is founded with a vision to provide integrated R&D support in all the key areas of Pharmaceutical development. We offer proprietary orthotopic and metastases tumor models. Our services include, whole body animal imaging, small animal ultra sound MRI, CT scan and other advanced technologies. We provide a complete array of research services as required for Investigational New Drug Applications (IND). AJES LifeSciences at Stony Brook New York is fully committed to the judicious, humane use of animals in research and development. We operate in AAALAC accredited and GLP compliant audited facilities.

## Why AJES?

With over 15 years of Experience in pre-clinical CRO sector, our executive team is forged by a diverse group of people whose individual talents were unified by an overall dedication to quality and integrity. We offer highly Competitive pricing compared to any Pre-clinical CRO worldwide. We maintain a Strong Customer relationship starting at the early stages of drug development.

## Pre Clinical Research



### In vitro Studies

- Tissue culture Cell isolation and cell line maintenance
- Serological and immunochemistry analyses
- Immunoassays (ELISA, EIA)
- Lead optimization/IC50 assays
- Flow cytometry/FACS Analysis
- 3D cultures/Angiogenesis inhibition assays

### Animal studies

- AJES has over 15 years of experience using xenograft and orthotopic tumor models.
- Our cell bank offers a wide selection of fully characterized cell lines used in our animal studies.
- We also offer fully tested bioluminescence (BLS) and fluorescent (FLS) cell lines.
- Example Dosage Routes: P.O., I.P, I.V, Infusion, I.T, I.M, S.C. etc.

### Toxicology/Drug metabolism

- Bio Analytical services
- Drug metabolism and pharmacokinetics
- Toxicology studies are designed as per major international guidelines applicable.
- In vivo Toxicology services
- Local tolerance studies
- Genotoxicity/Mutagenicity

## Animal Models

Disease type	Models
Cancer	Xenografts
	Orthotopic
	Syngeneic
	PDX
Diabetes	Type I/Type II Diabetes
Arthritis	Collagen induced
Cardio vascular	LDLR-/-, LDLR-/-apoE-/-

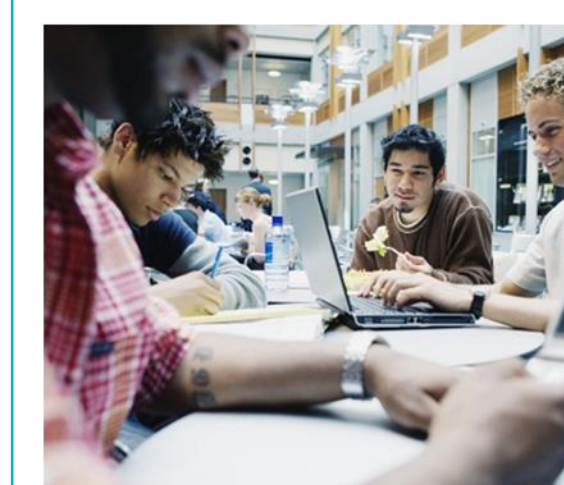
## Study Procedures

### Phase 1



Study Consultation

### Phase 2



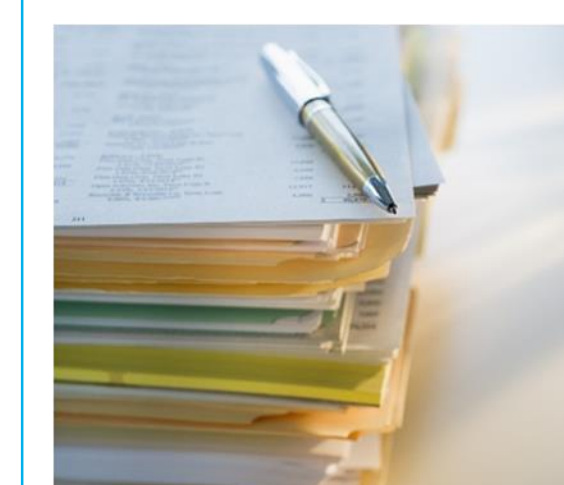
Study Design and approval

### Phase 3



Study execution and data collection

### Phase 4

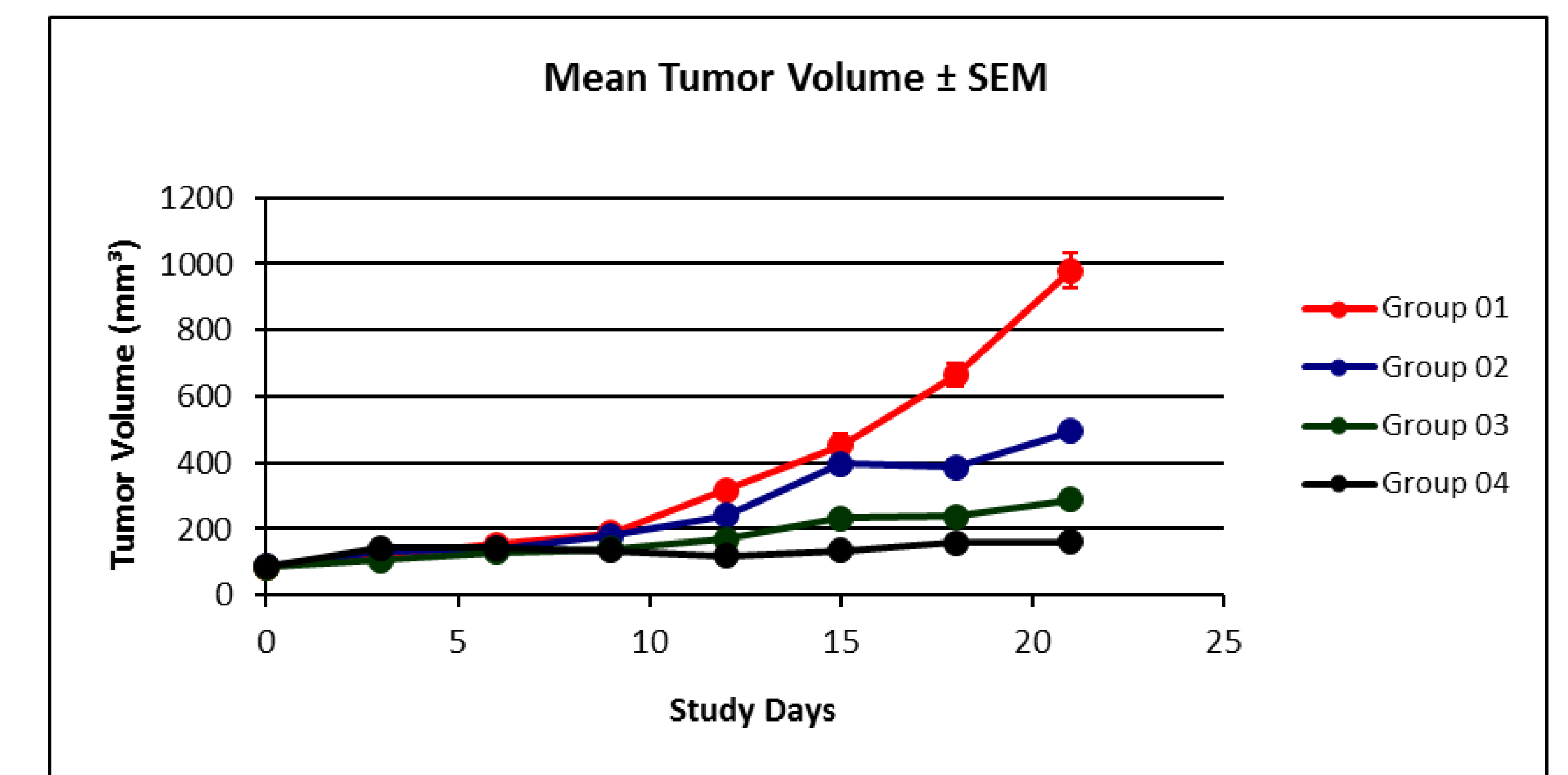


Post study deliverables including preparation of IND dossier

## Data Management

- At AJES, our entire animal study work flow is automated with studylog integration. Studylog facilitates the design, planning, conduct, analysis, and reporting of studies in a standardized and highly efficient manner while preserving results and their utility for years to come. This ensures our customers, data protection and security, achievability, graphing and statistical features, and the ease of networking.
- We strictly follow standard procedures to ensure data integrity and security, Any data generated (Raw data and electronic data) will be archived for at least 10 years after the conclusion of the study.
- Hard copies of data are stored at fire/weather proof facility and we strictly implement our customer requirements for data storage.

## Study Results



Anti-tumorigenic effects of AJ151014PO (Coded) in syngeneic pancreatic cancer model developed by AJES.

- Pancreatic cancer model used to test novel compound AJ151014PO (Coded)
- Pancreatic cancer cells ( $2 \times 10^6$ /mouse) were injected subcutaneously into the right dorsal portion of C57/BL6 mice
- When tumors measured approximately 80 mm<sup>3</sup>, mice were randomized to four groups (15 mice/group) to receive drug at 3 different concentrations or vehicle by oral gavage. Treatment was administered twice daily for 21 consecutive days. (day 0 is the treatment starting day).

## Contact us

- AJES Life Sciences labs are conveniently located in Stony Brook, just minutes from the heart of the New York academic and biotech communities.

### Contact details:

- 25 Health Sciences Drive  
Suite #243, Stony Brook 11794  
Email : Info@ajeslifesciences.com  
Telephone: 844-205-9599  
FAX: 631-444-8825

## Meet the Team

Dr. Suresh Anaganti Ph.D CEO

Darlene R Research Scientist

Kerry I Lucas Administrative manager